

5 Find out the risk level of your home

(How to interpret the flood hazard maps)

There are three hazard maps for Sumida City

① River floods

This map indicates the maximum predicted depth and duration of flooding around the Arakawa River in the event of the heaviest rainfall with breakages of all embankments that are at risk of breaking.

② Storm surges

Depth and duration of flooding for storm surges are those predicted to occur if a typhoon equivalent to the worst in history passes through the route that will cause the highest storm surge in Tokyo Bay. Cases in which a storm surge and river flooding both occur at once have also been taken into account.

③ Rainwater floods

This hazard map is a combination of the Koto Inner River Basin Flooding Area Forecast Map and the Sumidagawa River and Shingashigawa River Basin Flooding Area Forecast Map. River flooding is not expected in the inner river basin of the Koto area; this map indicates the depth of flooding that may be caused by blockage of drain pipes or water collecting on low ground.

Depth of flooding

Depth of flooding indicates the depth of the floodwaters that will occur if the Arakawa River floods and/or there is heavy rainfall. When floodwaters reach a depth of around 20cm, it becomes difficult to walk or open doors. Experts say that at depths of around 30cm, cars cannot move, so it will be difficult to evacuate by car. Check the depth of flooding in your neighborhood.

**Flooding could occur across a large area of Sumida City!
Evacuate outside the Koto area!**

Be careful of underground spaces and underpasses!

Floodwaters could be over 6m deep in some areas!



For river floods (①) and storm surges (②), check the depth of flooding for both types and prepare for the deeper of the two.

① River floods



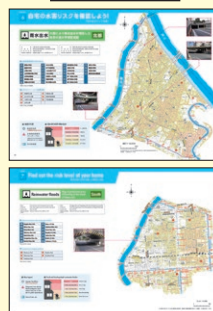
② Storm surges



Check the maps for the greater area

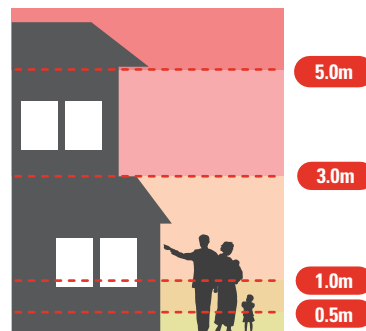
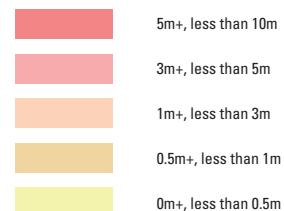
Make sure you're aware of dangerous areas in your home and neighborhood.

③ Rainwater floods



See p.14-17 for details

Guide for depth of flooding



Duration of flooding

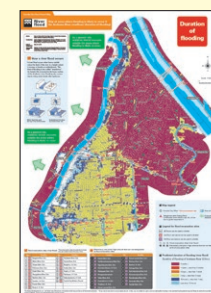
For river floods (①) and storm surges (②), the duration of flooding is the time until the depth of the floodwaters falls below 0.5m. Different durations are predicted for river flooding and storm surges. In some areas, flooding is predicted to last for more than two weeks, and buildings in those areas may be without infrastructure such as electricity and gas for a long time. Check the duration of flooding that is predicted for your neighborhood in the case of ① or ②.

For river floods (①) and storm surges (②), check the duration of flooding for both types and prepare for the longer of the two.

① River flooding



② Storm surge



Check the maps for the greater area

Predicted duration of flooding (river flood)

Duration of river flooding 0.5m+ deep



Predicted duration of flooding (storm surge)

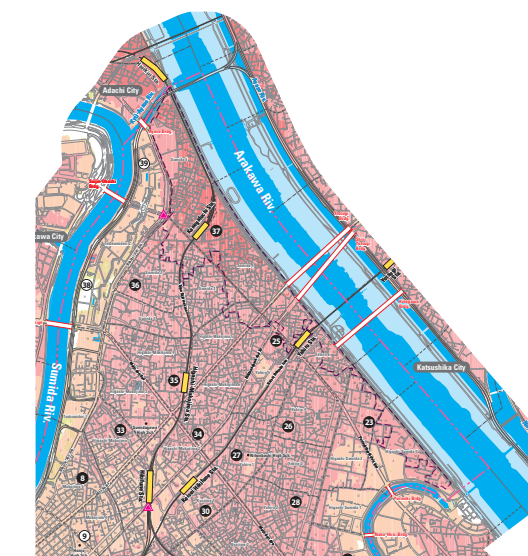
Duration of storm surge flooding 0.5m+ deep



Areas where residents must evacuate quickly

In some areas of Sumida City, there is a high risk of homes being destroyed or washed away by powerful floodwaters or bank erosion. If you live in one of those areas, you will need to evacuate quickly. The boundaries drawn for these areas are a guide only, and homes outside those areas could still be destroyed.

Areas where residents must evacuate quickly



Find out the risk level of your home

(Rainwater flood map - northern area)



Rainwater floods

Map of predicted area of flooding in the event of heavy rain

North

Name Koto Inner River Basin Flooding Area Forecast Map
Created by Urban Flood Support Liaison Council (Koto Inner Basin)
Creation date March 26, 2020
Maximum predicted rainfall Maximum 153mm per hour, 690mm in total rainfall

Name Sumidagawa River and Shingashigawa River Basin Flooding Area Forecast Map
Created by Urban Flood Support Liaison Council (Sumida River and Shingashi River Basin)
Creation date March 30, 2021
Maximum predicted rainfall Maximum 153mm per hour, 690mm in total rainfall

Flood evacuation sites (rainwater floods)

8 Kototoi Elem. Sch.	22 Nakagawa Elem. Sch.	29 Daiyon-azuma Elem. Sch.	36 Umewaka Elem. Sch.
9 Sumida J. H. Sch.	23 Kinewawaremoko	30 Hikifune Elem. Sch.	37 Sumida Elem. Sch.
10 Koume Elem. Sch.	24 Yahiro Area Plaza	31 Bunka J. H. Sch.	38 Sakuratsutsumi J. H. Sch.
18 Tachibana Azumanomori Elem. Sch.	25 Yahiro Elem. Sch.	32 Oshiage Elem. Sch.	39 Sumida City Athletics Ground
19 Tachibana Kindergarten, etc.	26 Azumadaini J. H. Sch.	33 Daiichiterajima Elem. Sch.	
20 Higashiazuma Elem. Sch.	27 Terajima J. H. Sch.	34 Daisanterajima Elem. Sch.	
21 Azumatachibana J. H. Sch.	28 Daisan-azuma Elem. Sch.	35 Dainiterajima Elem. Sch.	

*See p.23 for details

Locations of sandbag stations

6 Azumanishi Park	10 Higashi-Sumida Park
7 Fujinoki Park	11 Sumida Children's Playground
8 Tsubaki Park	12 Hiraibashi Warehouse
9 Tachibana Park	

*See p.34 for details

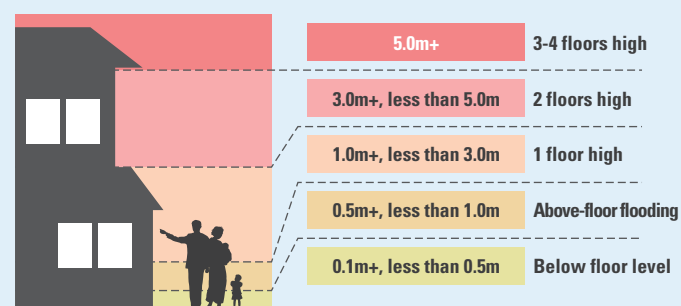
Map legend

Sumida City Office
*Not an evacuation site

Dangerous area during flood (underpass (area where road, etc. is low due to grade separation))

Area of river, etc.

Predicted flooding depth (rainwater floods)



Scale: 1:16,000



「この地図の作成に当たっては、国土地理院長の承認を得て、同院発行の基盤地図情報を使用した。
(承認番号 令元情使、第807-158号)」

Find out the risk level of your home

(Rainwater flood map - southern area)



Rainwater floods

Map of predicted area of flooding in the event of heavy rain

South

Name Koto Inner River Basin Flooding Area Forecast Map
Created by Urban Flood Support Liaison Council (Koto Inner Basin)
Creation date March 26, 2020
Maximum predicted rainfall Maximum 153mm per hour, 690mm in total rainfall

Name Sumidagawa River and Shingashigawa River Basin Flooding Area Forecast Map
Created by Urban Flood Support Liaison Council (Sumida River and Shingashi River Basin)
Creation date March 30, 2021
Maximum predicted rainfall Maximum 153mm per hour, 690mm in total rainfall

Flood evacuation sites (rainwater floods)

1 Ryogoku Elem. Sch.	11 Honjo J. H. Sch.
2 Midori Elem. Sch.	12 Yokokawa Elem. Sch.
3 Chuwa Elem. Sch.	13 Sotode Elem. Sch.
4 Kikukawa Elem. Sch.	14 Ryogoku J. H. Sch.
5 Kinshi Elem. Sch.	15 Futaba Elem. Sch.
6 Yanagishima Elem. Sch.	16 Kinshi J. H. Sch.
7 Narihira Elem. Sch.	17 Tatekawa J. H. Sch.

*See p.23 for details

Locations of sandbag stations

1 Kikukawa Park	4 Narihira Park
2 Wakamiya Park	5 Kinshibori Park
3 Yokokawa Park	

*See p.34 for details

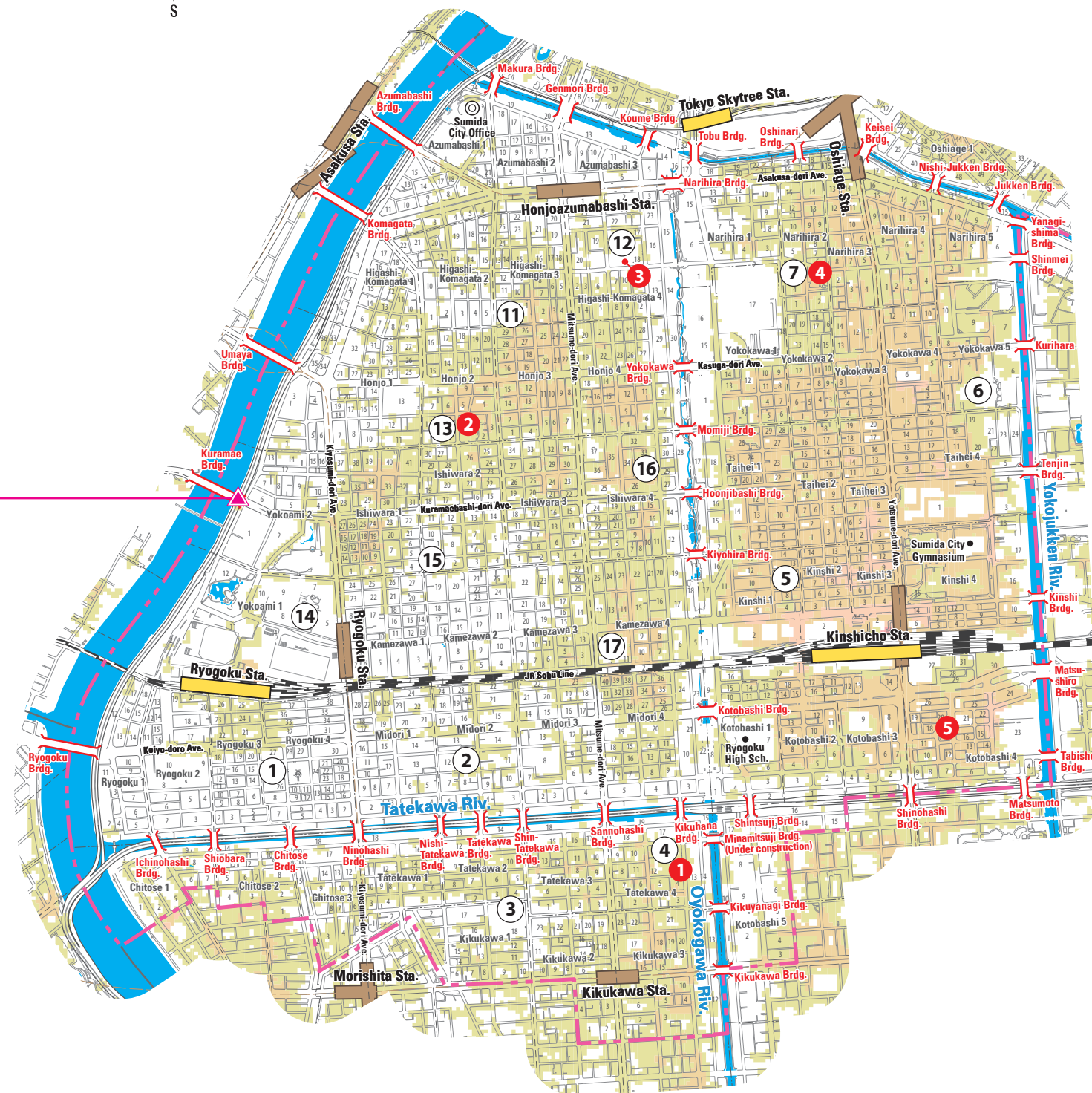
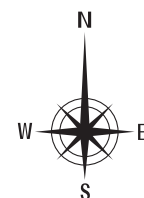
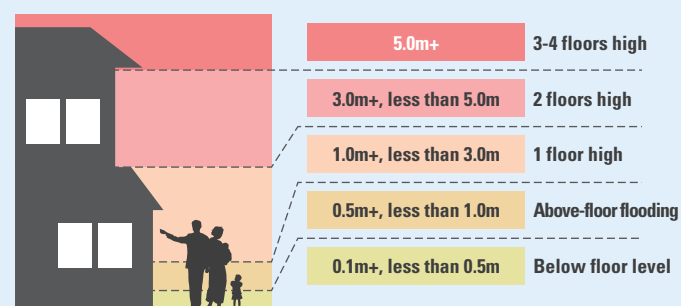
Map legend

Sumida City Office
*Not an evacuation site

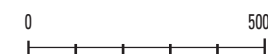
Dangerous area during flood (underpass (area where road, etc. is low due to grade separation))

Area of river, etc.

Predicted flooding depth (rainwater floods)



Scale: 1:16,000

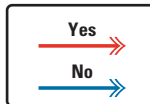


[この地図の作成に当たっては、国土地理院長の承認を得て、同院発行の基礎地図情報を使用した。(承認番号 令元清使、第807-158号)]

1 Figure out how you'll evacuate

Where to go

Start by using the flowchart below to find out how people in your area or building need to evacuate.



If there is a risk of flooding from the Arakawa River

All 5 cities in the Koto area will be ordered to evacuate outside the greater Koto area

Around 1-3 days before the flood

Voluntary evacuation outside the greater area

Evacuate to a safe place outside the Koto area as soon as possible

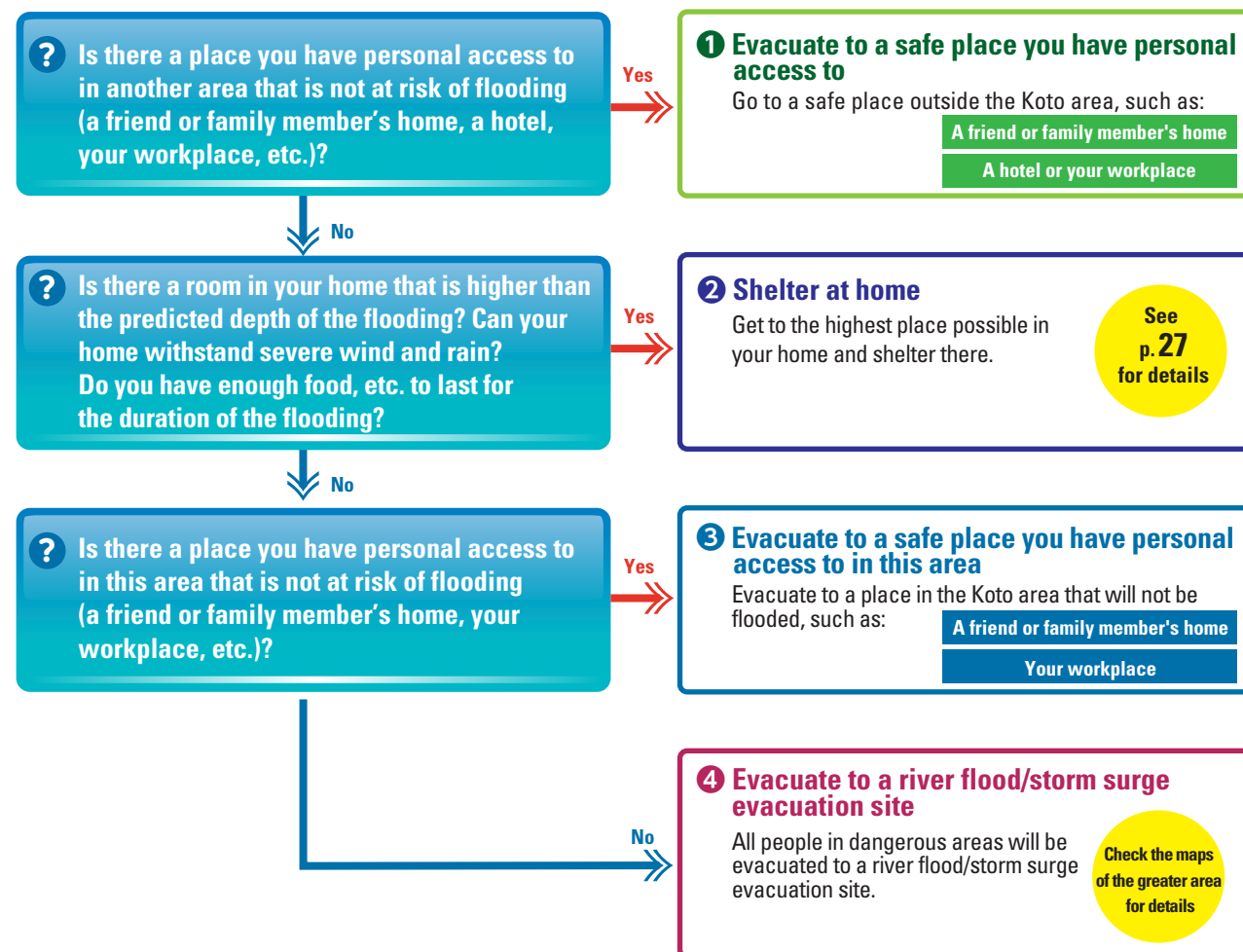
A river flood or storm surge could flood a large area of the 5 cities in the Koto area. Evacuate outside the Koto area.

Around 1 day before the flood

Greater area evacuation order

Immediately evacuate to a safe place outside the Koto area

See p. 20-26 for details



*Elementary and junior high schools that are not designated as river flood/storm surge evacuation sites

If you are unable to evacuate

A local upward evacuation (emergency) order may be issued
This order is given if the Arakawa River has flooded or is likely to flood.

Evacuate immediately to a high area of your home or to a high, sturdy building.

If there is a low risk of flooding from the Arakawa River but a risk of strong wind and/or heavy rain

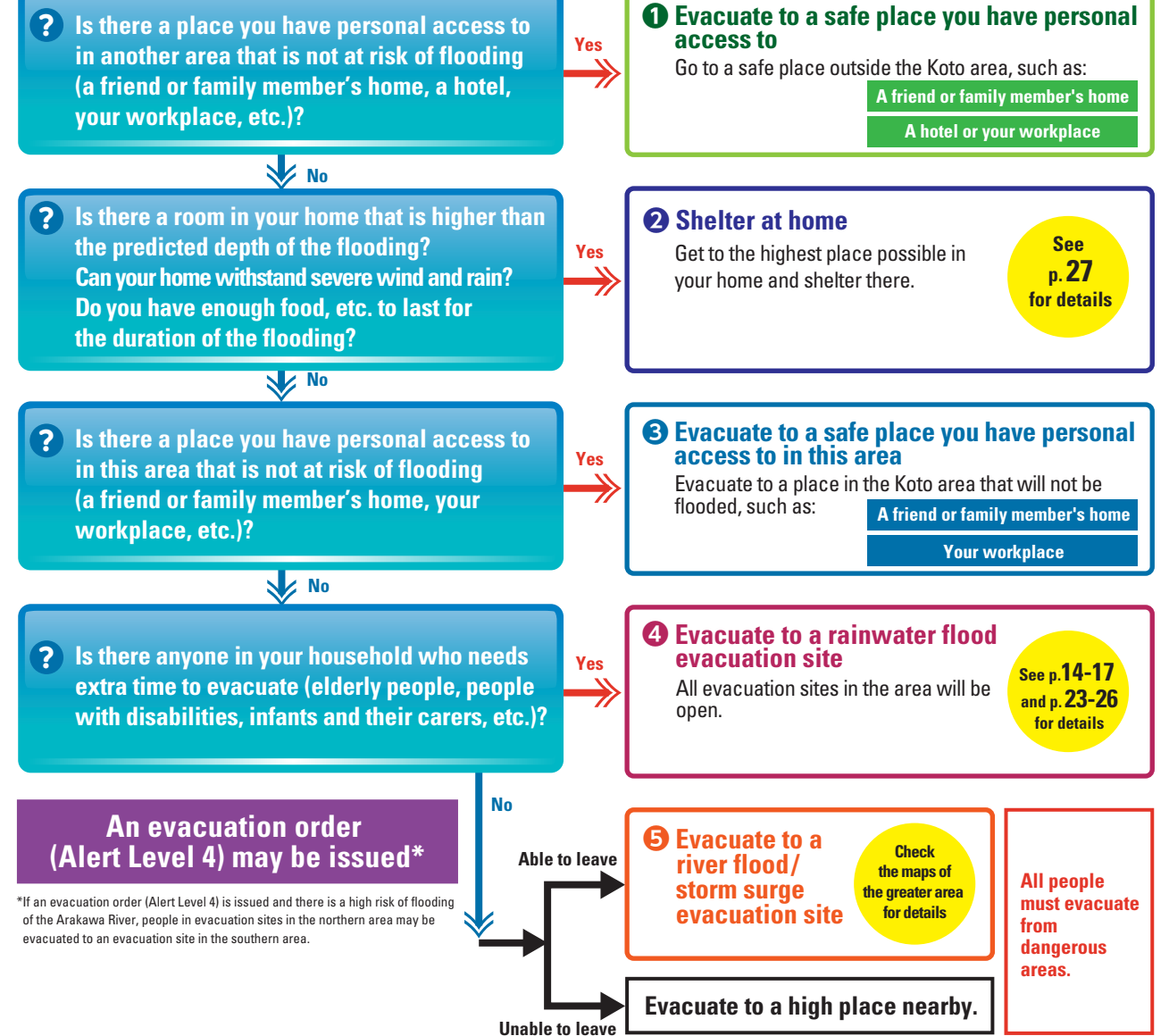
The Sumida City government will announce evacuation information based on the alert level

Around 0.5-1 days before the typhoon

Evacuation of elderly and vulnerable people (Alert Level 3)

Elderly and vulnerable people must evacuate from dangerous areas

See p. 20-26 for details



If you are unable to evacuate

An evacuation order (Alert Level 5) may be issued
This order is given if the Arakawa River has flooded or is likely to flood.

Evacuate immediately to a high area of your home or to a high, sturdy building.

Rainwater floods (localized heavy rain, etc.)

If flooding occurs rapidly

Get to a high building nearby or the top floor of your home.

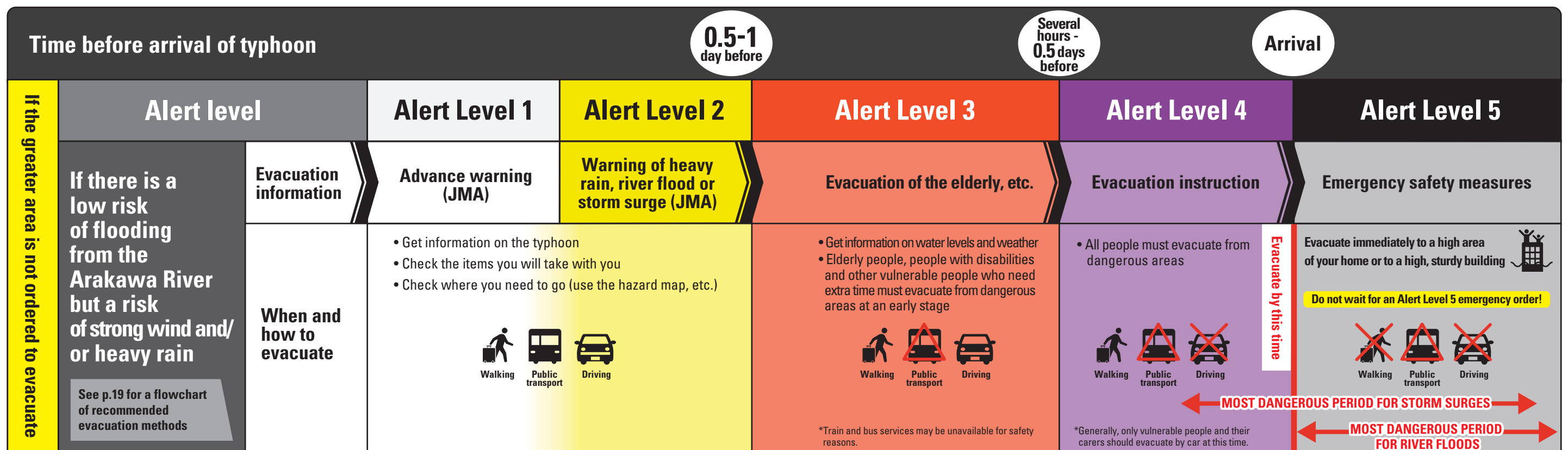
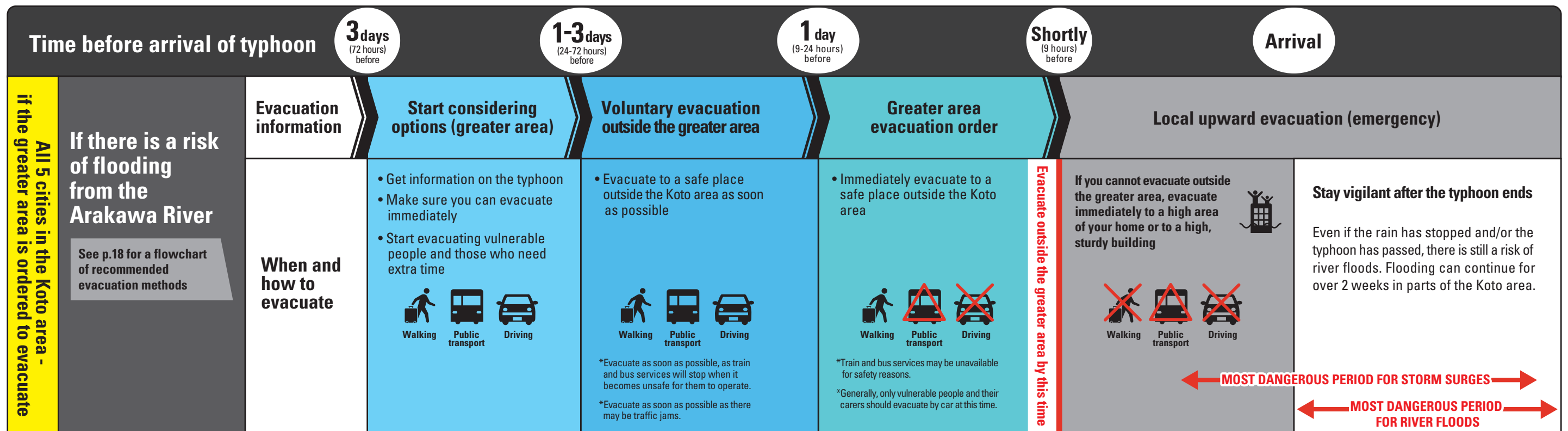


Refer to the evacuation information on this page when making your evacuation timeline (My Timeline).

See p. 28-31 for details

Figure out how you'll evacuate

When and how to evacuate



Rainwater floods

Conditions when evacuating

Rainwater floods are caused by short, localized downpours. These happen suddenly, so make sure you're always prepared.

If heavy rain is expected, get to a high building nearby or the top floor of your home.

Information to help you decide when to evacuate

Alert levels (5 levels) and evacuation information

In the event of a disaster, authorities such as the Sumida City government and Japan Meteorological Agency will use a **five-level alert system** to issue warnings and orders.

If an **Alert Level 4 evacuation order** is issued by the Sumida City government, **all people must evacuate from dangerous areas**.

You need to evacuate at Alert Level 1-4!



Arakawa River flood forecasts

Arakawa River flood forecasts are issued jointly by the Japan Meteorological Agency and the Ministry of Land, Infrastructure, Transport and Tourism as Designated River Flood Forecasts^{*1}. There are four types of forecast depending on the water level of the river.

Corresponding alert level	Type	Criteria for announcement	Water level at reference point ^{*2}	Evacuation information for affected cities
Equivalent to 5	Flood Information (Flooding)	As soon as flooding occurs in a city subject to flood forecasts	-	Emergency order
Equivalent to 4	Flood Information (Danger)	When flooding reaches a dangerous level at the reference point	Dangerous level of flooding 7.7m	Evacuation order
Equivalent to 3	Flood Information (Warning)	When flooding is expected to reach a dangerous level at the reference point, or when it has reached evacuation level and is expected to rise further.	Evacuation needed 6.5m	Evacuation of elderly and vulnerable people
Equivalent to 2	Flood Information (Caution)	When flooding has reached a level requiring caution at the reference point and is expected to rise further.	Caution needed 4.1m	-

^{*1} See p.25 for details on Designated River Flood Forecasts.

^{*2} The reference point for Sumida City is the gauging station at the Iwabuchi Floodgates (upstream).

List of flood evacuation sites

Where to go when your life is in danger

	Flood Evacuation Site	Address	Designated Evacuation Sites		Accessible toilets	Elevator
			River flood/storm surge	Rainwater flood		
1	Ryogoku Elem. Sch.	Ryogoku 4-26-6	✓	✓		
2	Midori Elem. Sch.	Midori 2-12-12	✓	✓	✓	☎
3	Chuwa Elem. Sch.	Kikukawa 1-18-10	✓	✓		
4	Kikukawa Elem. Sch.	Tatekawa 4-12-15	✓	✓		
5	Kinshi Elem. Sch.	Kinshi 1-9-12	✓	✓	✓	
6	Yanagishima Elem. Sch.	Yokokawa 5-2-30	✓	✓		
7	Narihira Elem. Sch.	Narihira 2-4-8	✓	✓		
8	Kototoi Elem. Sch.	Mukojima 5-40-14	—	✓	✓	
9	Sumida Elem. Sch.	Mukojima 4-25-22	✓	✓	✓	☎
10	Koume Elem. Sch.	Mukojima 2-4-10	✓	✓	✓	
11	Honjo J. H. Sch.	Higashi-Komagata 3-1-10	✓	✓		
12	Yokokawa Elem. Sch.	Higashi-Komagata 4-18-4	✓	✓		
13	Sotode Elem. Sch.	Honjo 2-1-16	✓	✓		
14	Ryogoku J. H. Sch.	Yokoami 1-8-1	✓	✓	✓	☎
15	Futaba Elem. Sch.	Ishiwara 2-1-5	✓	✓	✓	
16	Kinshi J. H. Sch.	Ishiwara 4-33-14	✓	✓		
17	Tatekawa J. H. Sch.	Kamezawa 4-11-15	✓	✓		
18	Tachibana Azumanomori Elem. Sch.	Tachibana 1-18-6	—	✓	✓	☎
19	Tachibana Kindergarten, etc.	Tachibana 1-25-9, etc.	—	✓		
20	Higashiazuma Elem. Sch.	Tachibana 4-22-11	—	✓	✓	
21	Azumatachibana J. H. Sch.	Tachibana 5-48-2	—	✓	✓	☎
22	Nakagawa Elem. Sch.	Tachibana 5-49-4	—	✓	✓	
23	Kinegawawaremoko	Higashi-Sumida 2-15-2	—	✓	✓	☎
24	Yahiro Area Plaza	Yahiro 4-35-17	—	✓	✓	☎
25	Yahiro Elem. Sch.	Yahiro 5-12-15	—	✓		☎
26	Azumadaini J. H. Sch.	Yahiro 4-4-4	—	✓	✓	☎
27	Terajima J. H. Sch.	Yahiro 1-17-15	—	✓		
28	Daisan-azuma Elem. Sch.	Yahiro 2-36-3	—	✓	✓	
29	Daiyon-azuma Elem. Sch.	Kyojima 3-64-9	—	✓		
30	Hikifune Elem. Sch.	Kyojima 1-28-2	—	✓		
31	Bunka J. H. Sch.	Bunka 1-22-7	—	✓		☎
32	Oshiage Elem. Sch.	Oshiage 3-46-17	—	✓		☎
33	Daiichiterajima Elem. Sch.	Higashi-Mukojima 1-16-2	—	✓		
34	Daisanterajima Elem. Sch.	Higashi-Mukojima 6-8-1	—	✓	✓	
35	Dainiterajima Elem. Sch.	Higashi-Mukojima 4-30-2	—	✓		
36	Umewaka Elem. Sch.	Sumida 2-25-1	—	✓	✓	☎
37	Sumida Elem. Sch.	Sumida 4-6-5	—	✓	✓	☎
38	Sakuratsutsumi J. H. Sch.	Tsutsuimori 2-19-1	✓	✓	✓	☎
39	Sumida City Athletics Ground	Tsutsuimori 2-11-1	✓	✓	✓	☎

- Be aware that city offices are not evacuation sites.
- Be aware that some evacuation sites may not open depending on the type of flooding (river flood, etc.).
- If you are evacuating with pets, put them in carriers and bring supplies such as a pet sheet and pet food.

Check this website to find out which flood evacuation sites are open and how full they are.

<https://sumida.hinanjo.dmacs.jp/>

